

S2

Tech Srl

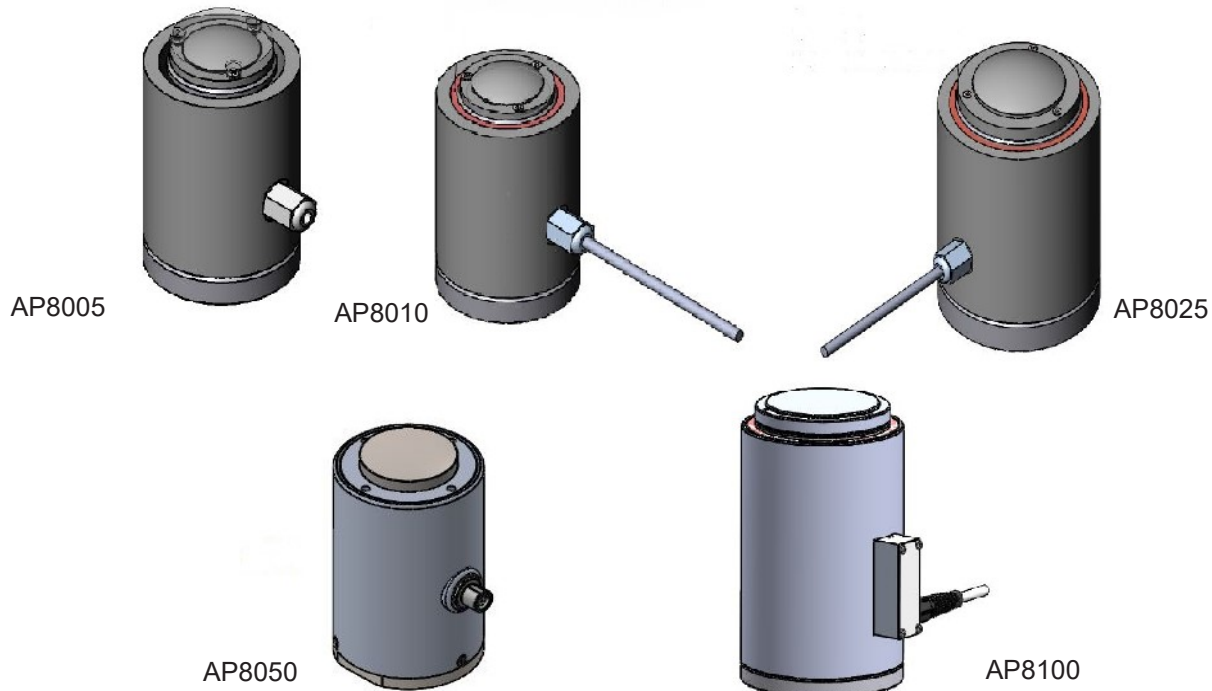


Smart Solutions

CANopen

LOAD CELLS SERIES AP8000

Modbus



COMMON FEATURES OF THE SERIES AP8000

- High accuracy, outstanding ruggedness, easiness of installation, convenient price
- Body in high strength steel. Strain gauges and electrical circuits sealed and stuffed by water-repellent, high-insulating silicon filler for outdoor applications
- Version with 16 strain gauges available: they are well distributed along the circumference: to improve the insensitivity to transverse component of the applied force; to assure an excellent linearity, higher electrical excitation and signal output. This is important because amplifier gain, electrical noise and thermal drift are reduced and digital readout can be extended to more digits to improve the measuring resolution
- Internal calibration circuit: to allow a simple field calibration of the weighing system. The calibration value in Kg is exactly listed on the calibration certificate supplied with each cell
- Possibility of choice of electrical connections: by connector (suffix: -C) or by cable (suffix: -W) as imperative for outdoor installations
- Versions available: A5 (for 0-5 V amplified signal); A1 (for 0-10 V amplified signal); A4 (for 4-20 or 0-20 mA amplified signal); D21 (for connection to RS485 link, with Modbus protocol); D41 (for connection to CANopen link)

MAIN APPLICATIONS

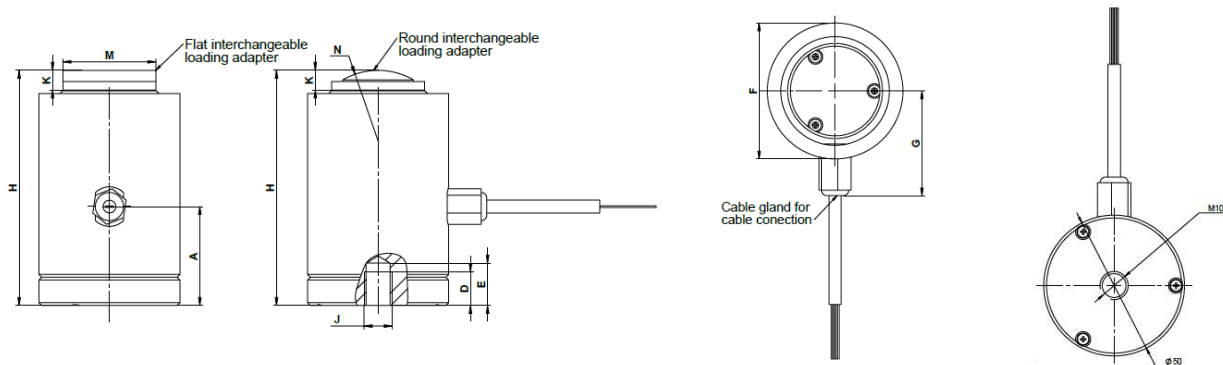
Load cells Series AP8000 can be used for:

- ◆ Weighing systems
- ◆ Platforms
- ◆ Reservoirs
- ◆ Bunkers
- ◆ Hoppers
- ◆ General purposes.

TECHNICAL SPECIFICATIONS

- Measuring range: AP8005 - 5 Ton
AP8025 - 25 Ton
AP8100 - 100 Ton
- AP8010 - 10 Ton
AP8050 - 50 Ton
- Sensitivity: 1mV/V FS
- Maximum error (non-linearity + hysteresis + temperature effect on sensitivity): $\leq \pm 0,1\%$ FS
- Creep error: $\leq \pm 0,15\%$ FS, during 4 hours test at FS
- Repeatability error: $\leq 0,1\%$ FS
- Temperature effect error on zero output within 5°K: $\leq \pm 0,07\%$ FS
- Zero output return error: $\leq \pm 0,05\%$ FS after 30 min. at FS
- Zero unbalance: $\leq \pm 2\%$ FS
- Bridge impedance: output 1400 Ohms input: 1500 Ohms, nominal
- Excitation: recommended 10 Vdc/ac
- Safe load limit: 50% over FS
- Ultimate load limit: about 2 times the FS with load on the weighing axis
- Electrical connection: by cable 2 m long or by connector
- Temperature limits: compensated -10°C ÷ 40°C operating -15°C ÷ 75°C

OVERALL DIMENSIONS



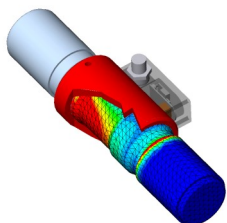
MODEL	MEASURING RANGE	DIMENSIONS (mm)									
	Ton	A	D	E	F	G	H	J	K	M	N
AP8005	0 ± 5	35	12	15	50	38,5	83,2	M10	7	33	R25
AP8010 Flat	0 ± 10	35	12	15	50	38,5	83	M10	7	33	
AP8010 Round	0 ± 10	35	12	15	50	38,5	83	M10	3	33	R25
AP8025 Flat	0 ± 25	35	12	15	70	48,5	98	M10	12	53	
AP8025 Round	0 ± 25	35	12	15	70	48,5	98	M10	5	53	R40
AP8050	0 ± 50	58	20	20	77	50	130	M18x2.5	10	50	R100
AP8100	0 ± 100	100	15	20	120	70	187,5	M10	15,5	80	

DEVELOPMENT AND MANUFACTURING OF CUSTOM PRODUCTS

S2Tech technical department, with 30 years experience acquired with DS Europe, can develop products accordingly to customers' technical specifications with the following tools:

- 3D mechanical design CAD software stations.
- Finite Element Analysis **FEA** software stations.
- *Digital and analog electronic* development accordingly to EMC (= CE) stricter industrial marking regulations (with tests in anechoic room at Competent Body third party laboratory).
- *Software and embedded firmware* development accordingly to most popular industrial bus systems (CANopen, Modbus, PROFIBUS etc.)
- Fast prototyping.

S2Tech develops new products or modifies existing ones, in order to realize the fittest and more convenient product.



ISO9001:2015
Cert. n.6687